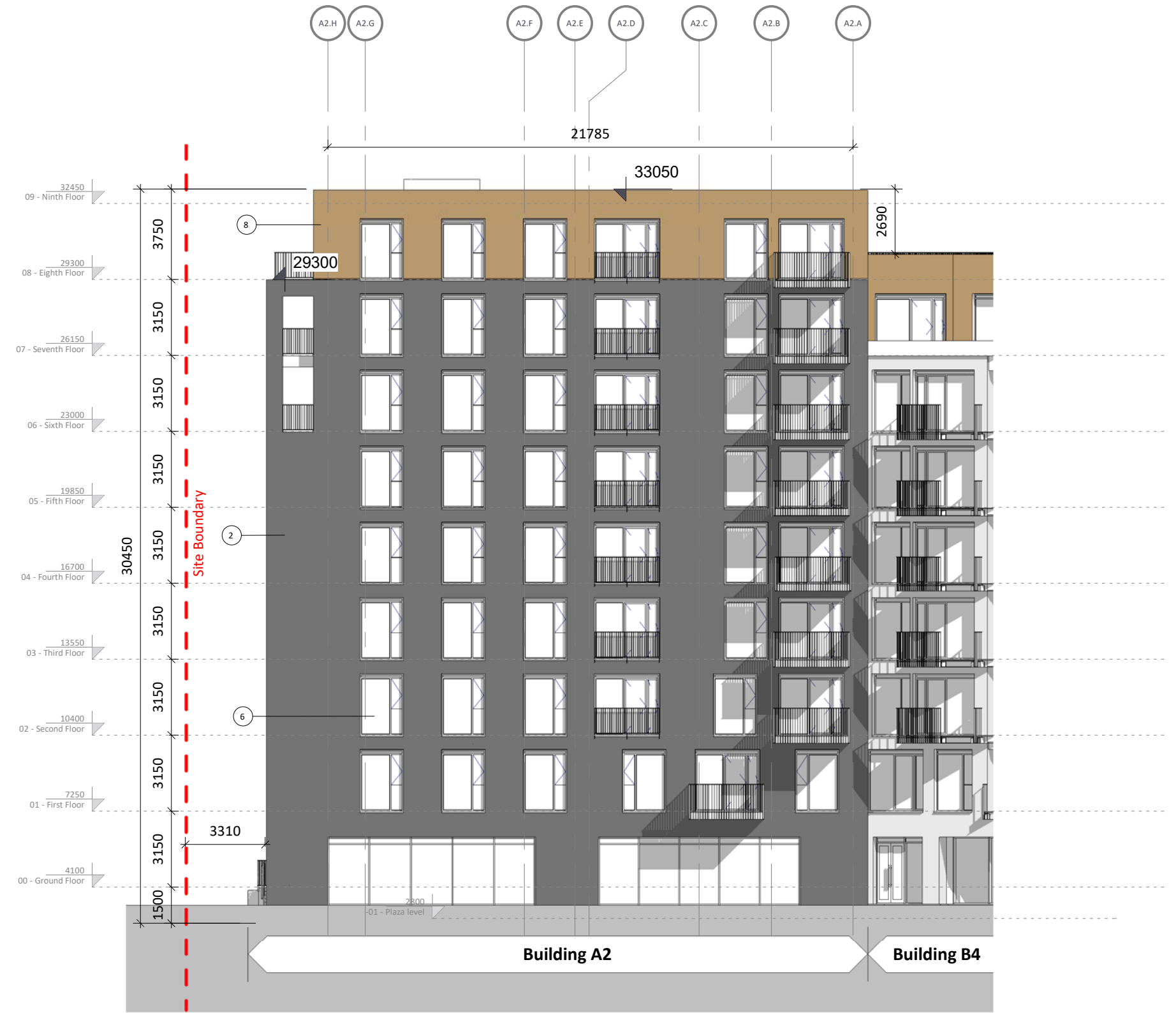




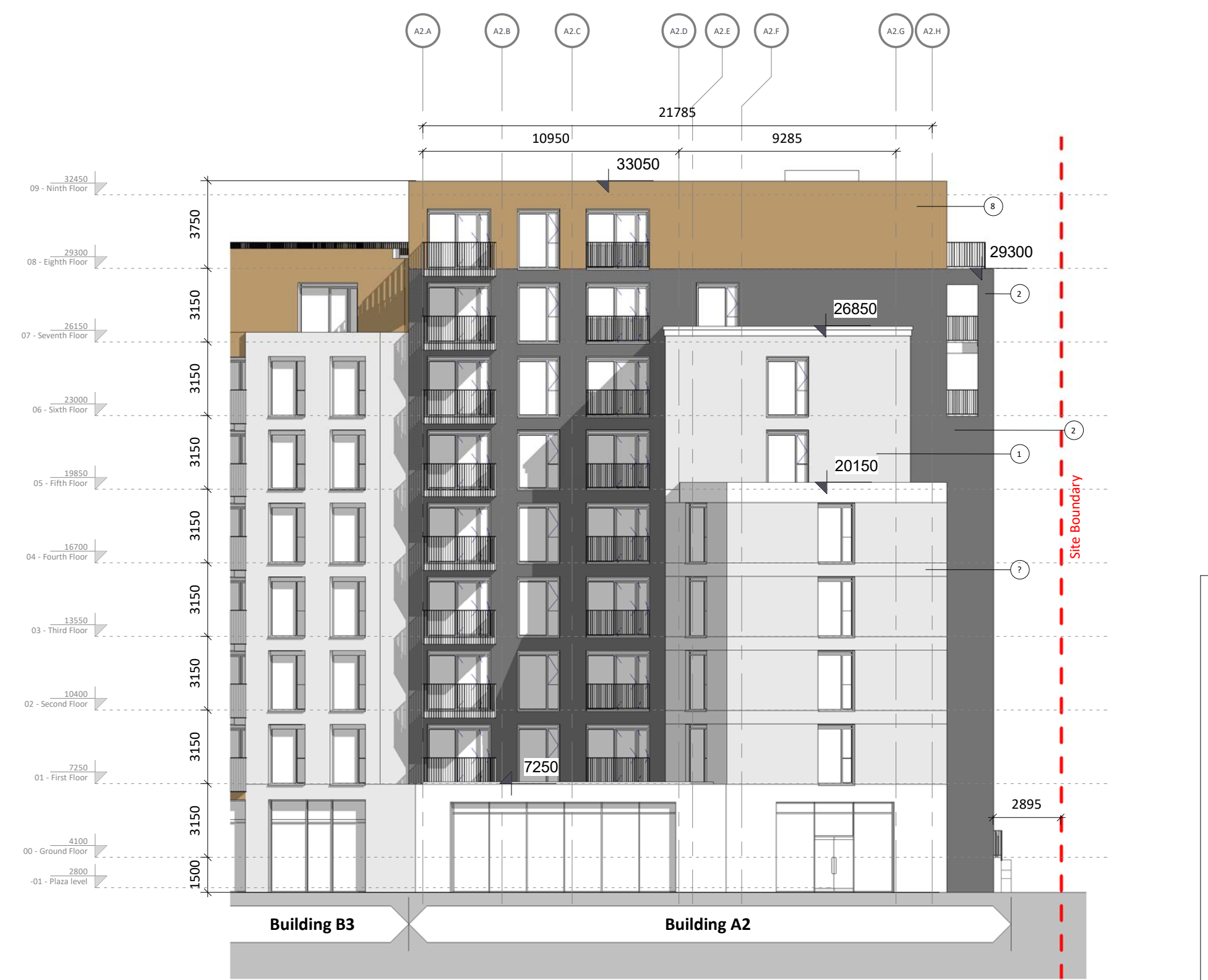
1 Block A2-North  
1:200



3 Block A2-East  
1:200



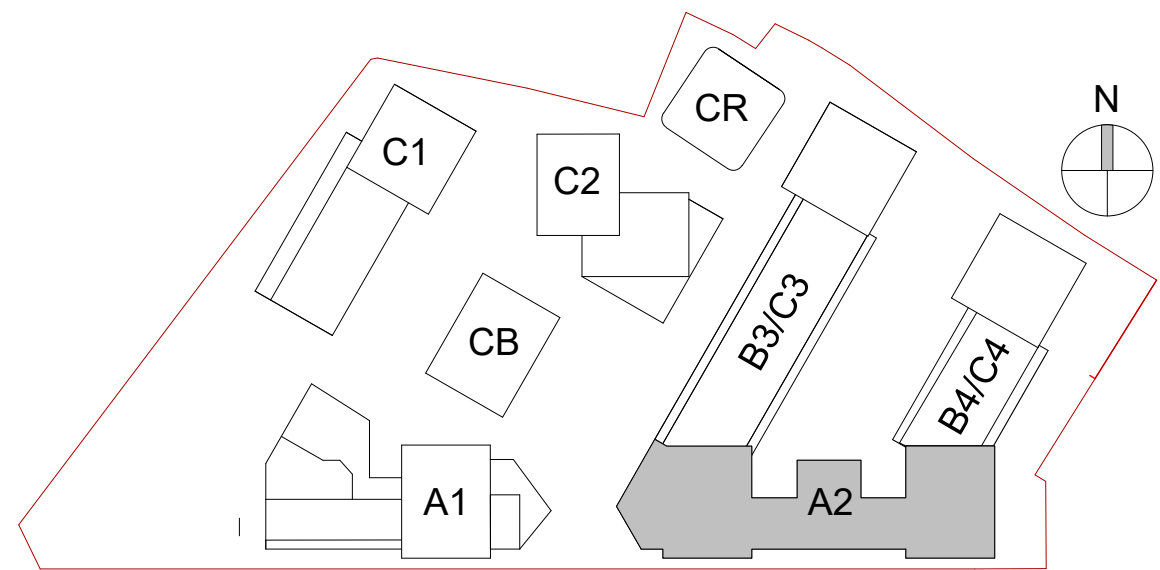
2 Block A2-South  
1:200



4 Block A2-West  
1:200

MATERIAL TAG	
1-	Brick Type A
2-	Brick Type B
3-	Brick Type C
4-	Brick Type D
5-	Selected Render
6-	Selected Aluminium Window System with Spandrel Panel
7-	Mild Steel Balustrade
8-	Metal (Gold)
9-	Metal (Red)
10-	Recon Stone Concrete (Grey)
11-	Precast Concrete (Red)
12-	Concrete
13-	Timber Louver
14-	Steel
15-	Polycarbonate Panel
16-	Render Gold

Block A2 Elevations



Revision Description	Date	Rev. No.	Issued by
SHD Lodgment to ABP	01-12-20	1	JM

**omahony pike**

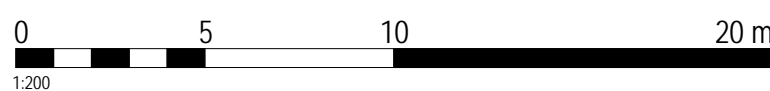
Project Code: 1826  
Project Lead: JM  
Scale @ A1: 1:200  
Date: 01-12-20  
Drawn By: SP  
Revision: 1  
Job No.: 1826  
Status: 50  
Purpose: Planning

architecture | urban design  
Dublin  
email: info@omahonypike.com  
tel: +353 1 202 7400  
fax: +353 1 283 0822  
www.omahonypike.com

Cork  
One South Mall  
Cork City  
Co. Cork  
T12 CCN3 Ireland

Project: Castleforbes SHD  
Location: Castleforbes, Sheriff Street Upper, Dublin  
Client: Glenveagh Living

Drawing Title: Block A2 Elevations  
Drawing No.: 1826-OMP-A2-ZZ-DR-A-2000



Figured dimensions only to be used. This drawing is copyright of O'Mahony Pike Architects Ltd. All information is shared as per approved use in accordance with ISO19650-2:2018, Table 5; Standard Codes for Suitability of Models and Documents and the BEP. If the 'Status' field is empty, this information has been shared at 50 - WIP.

Source file: 1826-OMP-A2-ZZ-DR-A-0001.rvt